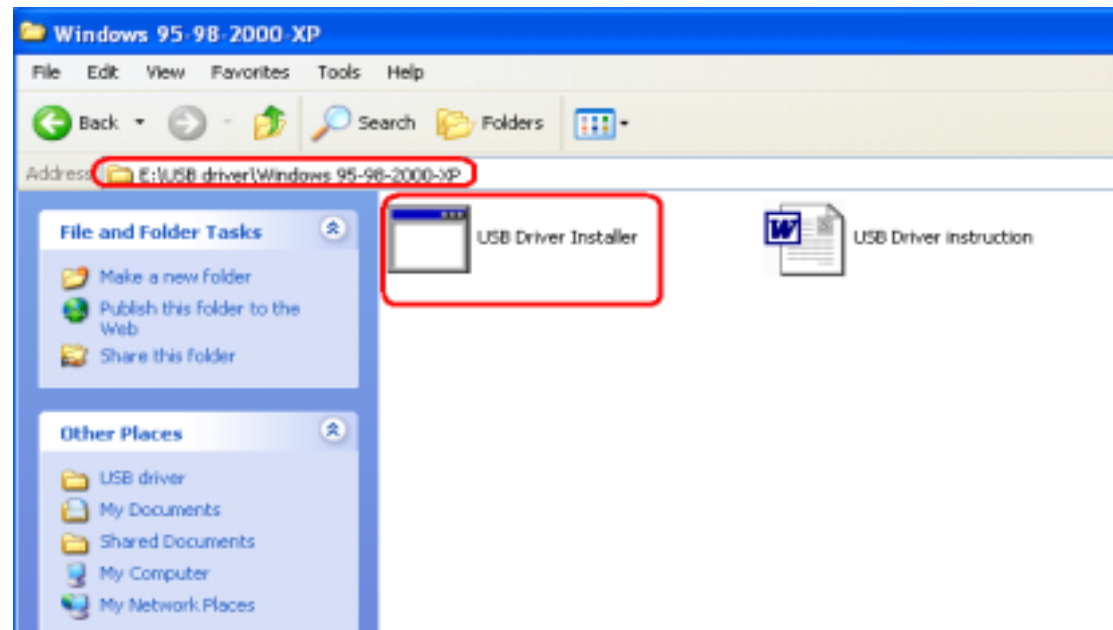
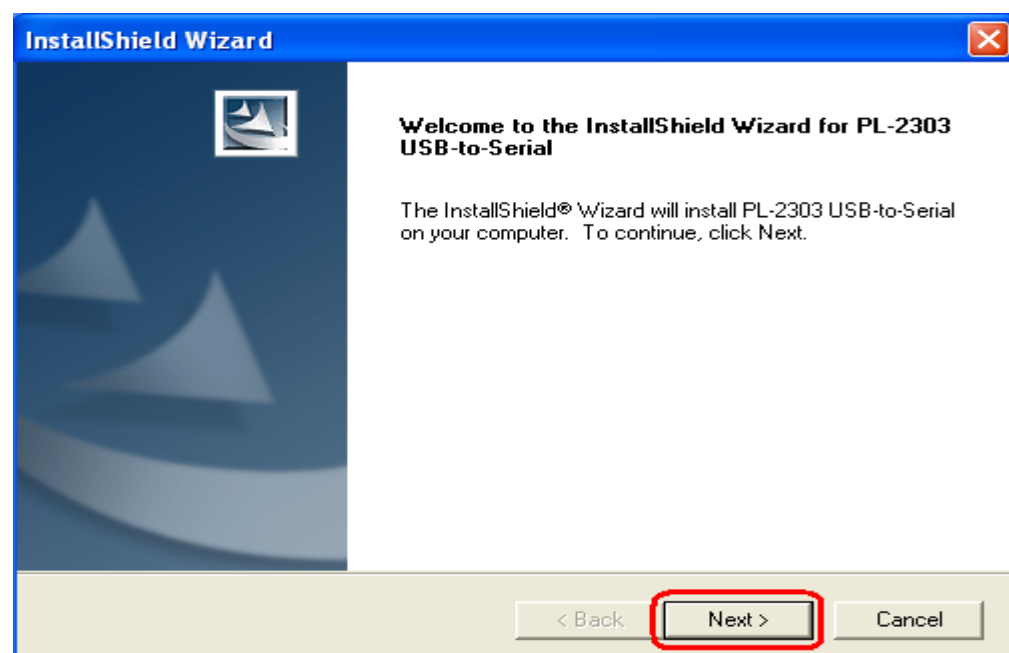


GPS logger, engine board and mouse series USB driver installation instruction for Windows 98, 2000, XP:

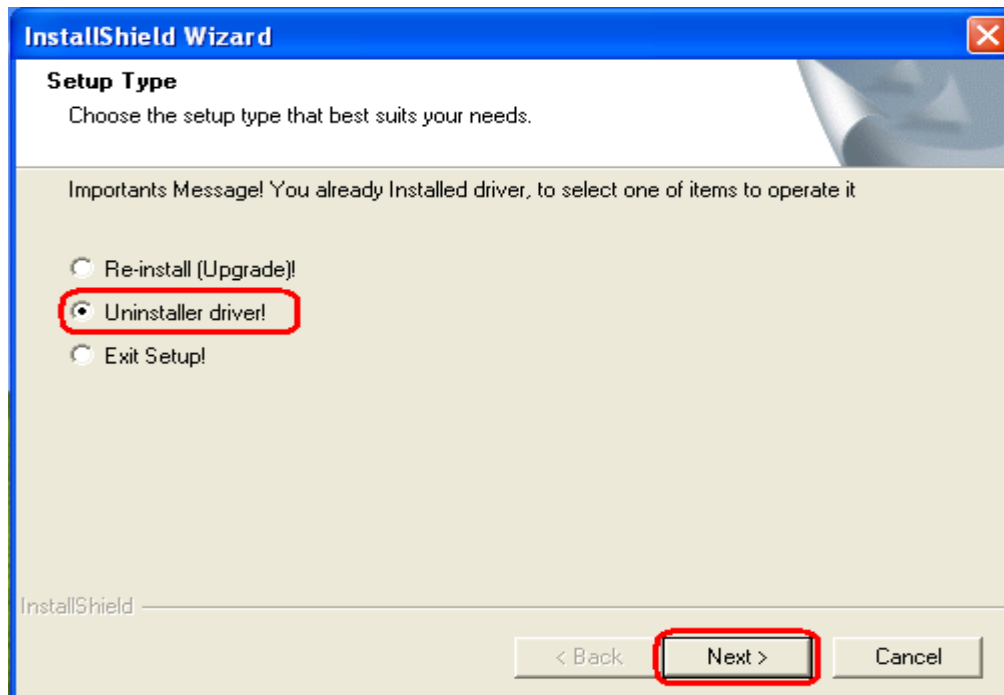
1. Before installing the USB driver to your computer, please don't plug your GPS USB product to your computer.
2. Place the CD attached in the package into your CD-ROM drive.
3. Browse it and choose USB Driver/Windows 95-98-2000-XP folder.



4. Click the setup file and press “Next”.



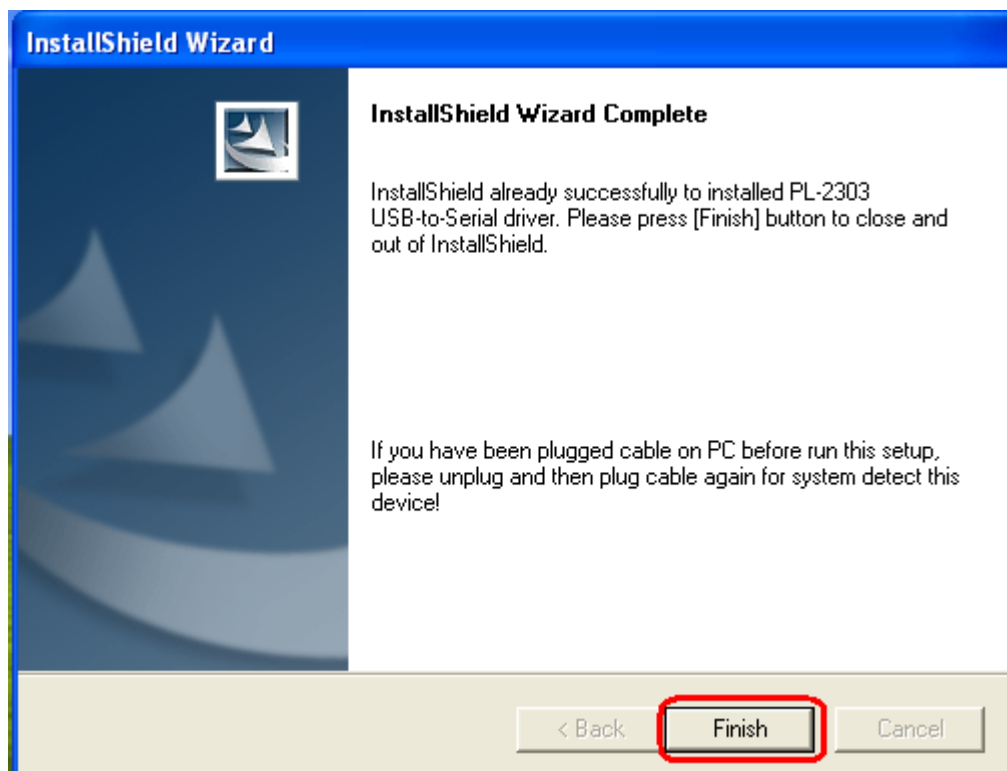
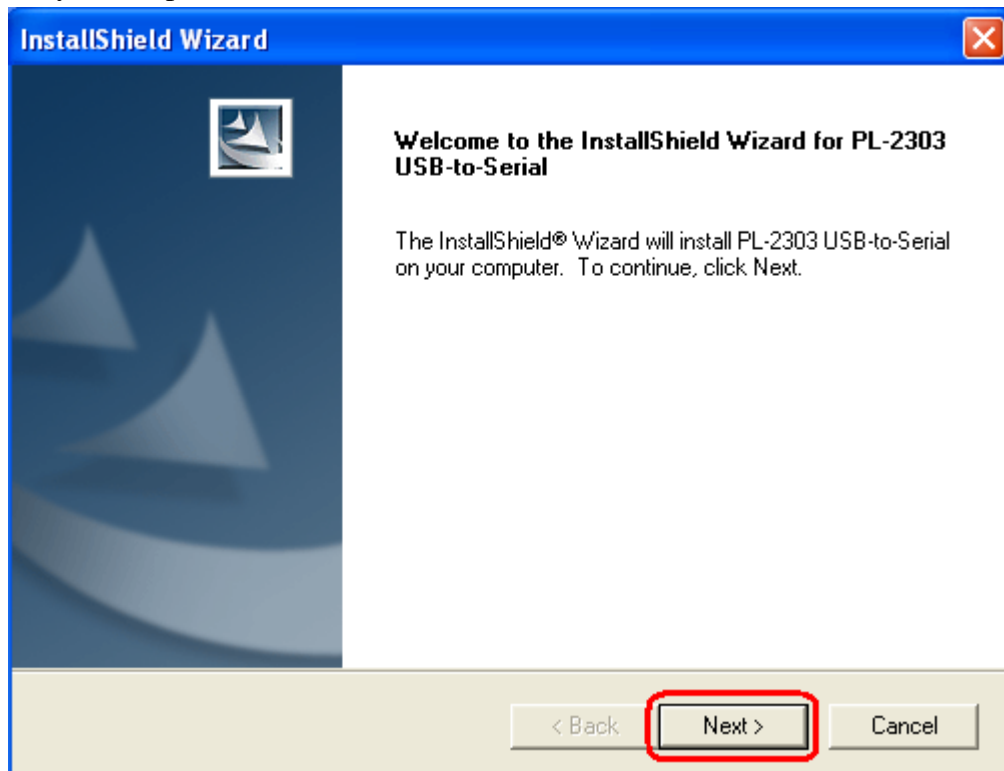
5. Choose the Remove option to remove the previous version of the driver if there's any. If there's not, please follow the instructions from step 8.



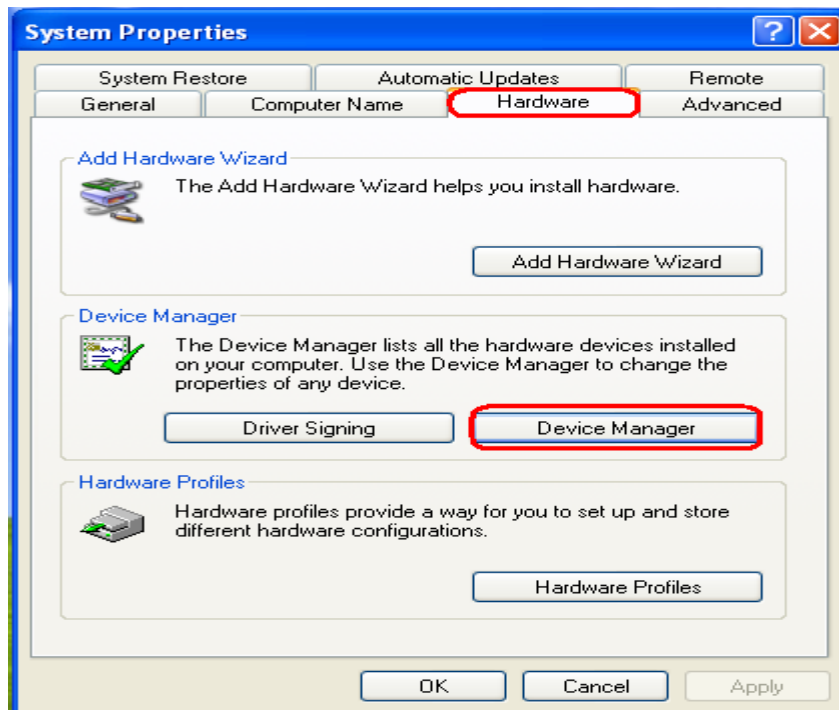
6. When the removal is done, the system asks you to reboot your computer, please choose "Yes" before you install the newer version of the USB driver.



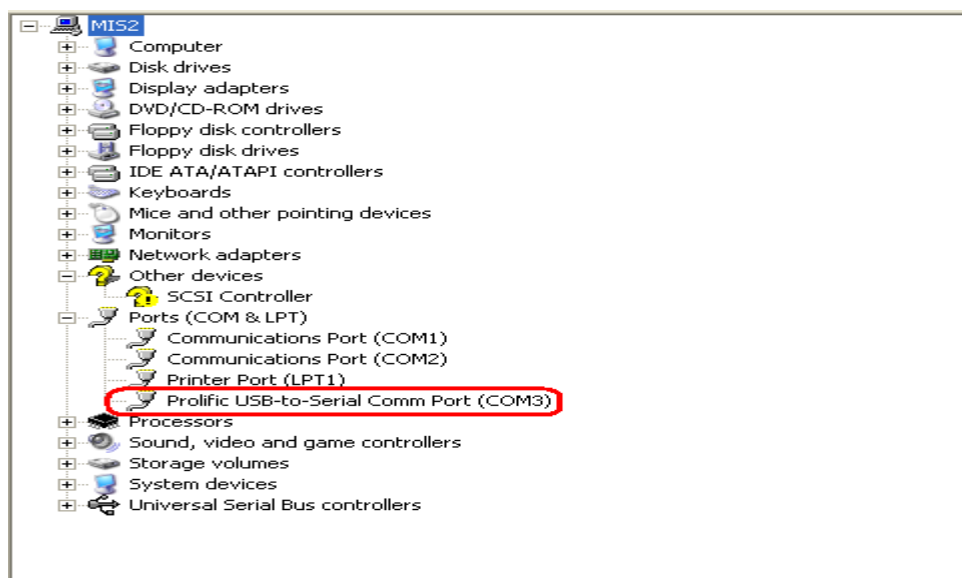
7. After restart your computer, browse the CD, choose the Windows folder and click the setup file again.
8. Press "Next", and it will thoroughly and automatically install the USB driver to your computer.



9. When it's done, Plug your GPS USB series product into your computer.
10. The screen shows "detect a USB-serial controller device".
11. The system will find its corresponding driver automatically.
12. When it's done, right click "My computer icon" then click "system properties" and find "device manager".



13. Find "Ports (Com & Lpt)", browse it and find "Prolific USB-to-serial Com Port (COM X)" X might be a number depending on your computer's Com Port's situation.



14. Indicate Com port number when you try to use your USB-GPS product as a GPS device.